

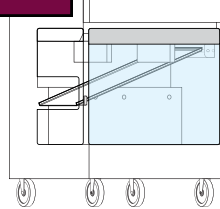
1



Turn on the Dispenser.

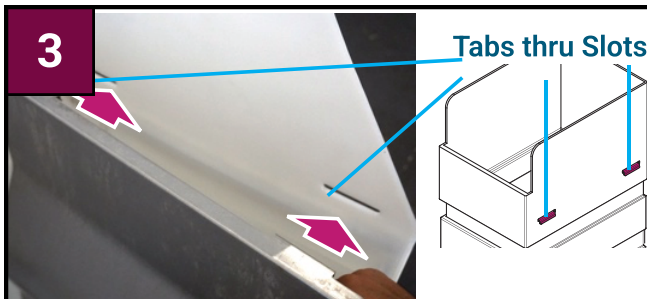
⚠ IMPORTANT!
Make sure that
all interior
surfaces are dry.

2



Remove clear
front barrier.

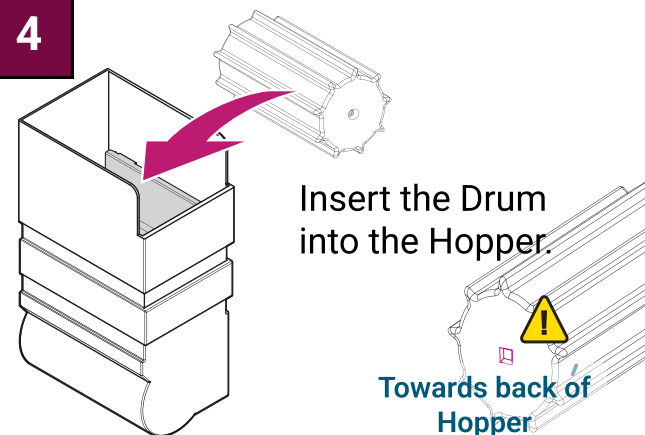
3



Insert the Diverter into the first Hopper.
Hook the two tabs into the slots on the
side of the Hopper so they are firmly
seated.

⚠ IMPORTANT! If tabs are loose, the
Dispenser will waste food.

4

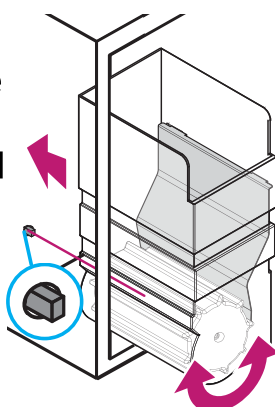


Insert the Drum
into the Hopper.

IMPORTANT! The square hole on the
drum goes to the back of the
Hopper!

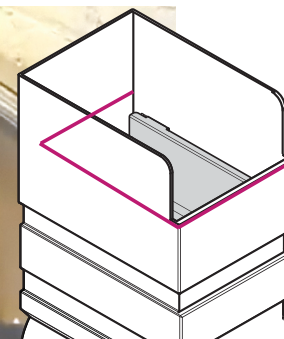
5

Slide Hopper into the
Dispenser. Reach in
and rotate Drum until
it slides onto the
square shaft and
push Hopper all the
way in.



6

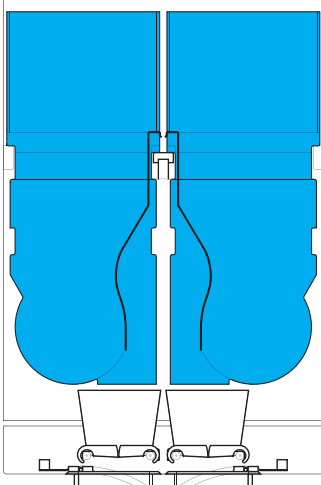
32°F



Once temperature is 32°F or less, fill with food items such as Fries up to just
below lip on the front.

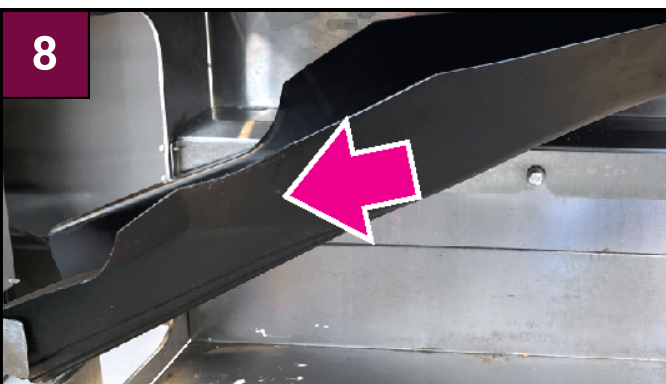
⚠ IMPORTANT! Ensure the food is loaded into the correct spaces according to
their arrangement (left- right) as shown on the touchscreen

7



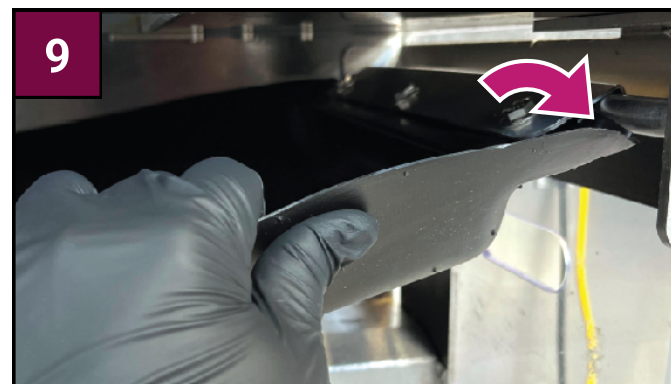
Repeat Steps
2-5 for the
second
Hopper.

8



Install the Dispenser Chute by
passing the bottom end through the
hole on the side barrier.

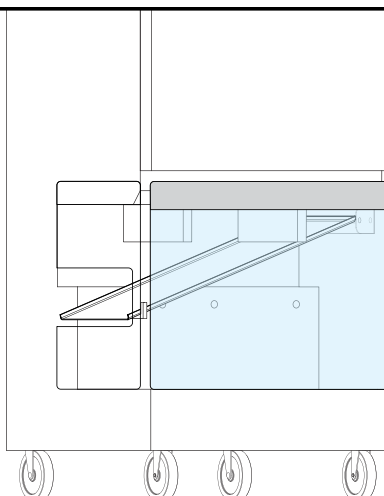
9



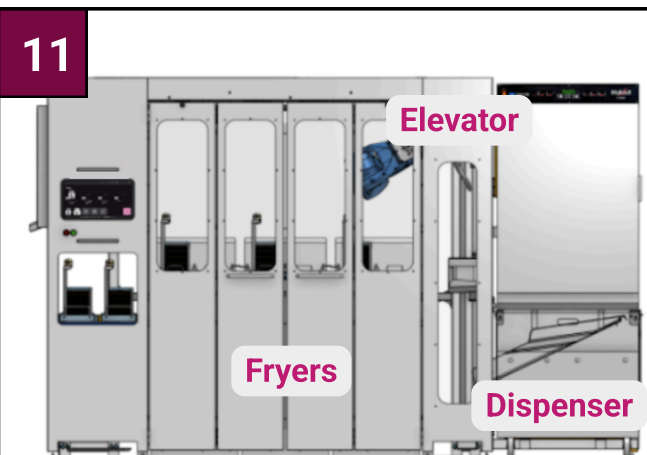
Hook the upper end onto the
support rail.

10

Attach clear
front barrier.



11



Make sure the Dispenser Catch Pan
is in place.