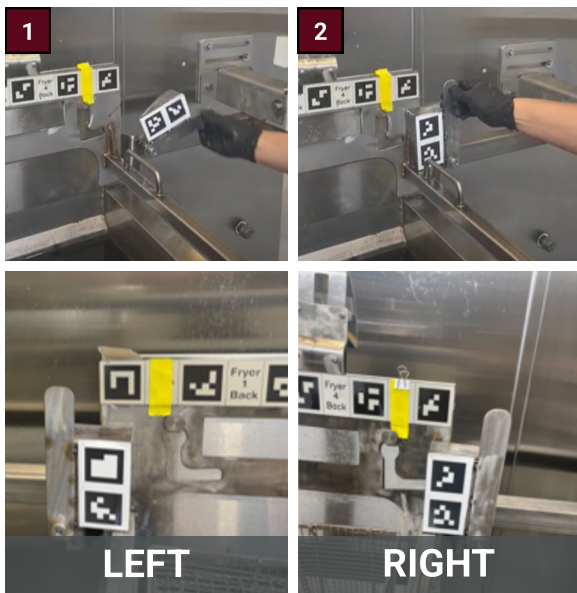


1. Place Basket Racks onto Fryer

- A. Use the heat safe handles when interacting with the Basket Racks.
- B. Align the grooves of the back plate to the studs on the back of the Fryer.

2. Lock Fryers

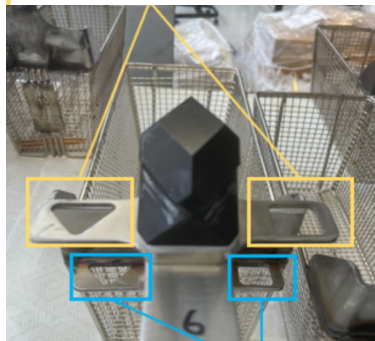
- A. Rotate Fryer Handles until they are facing up.



3. Set up Baskets

- A. Align the lower tabs of the Basket onto the Basket alignment pins.

Upper Tabs:
Cooking Position.



Lower Tabs:
Hanging Position.

Left Basket:
Hanging Position.



Right Basket:
Cooking Position.

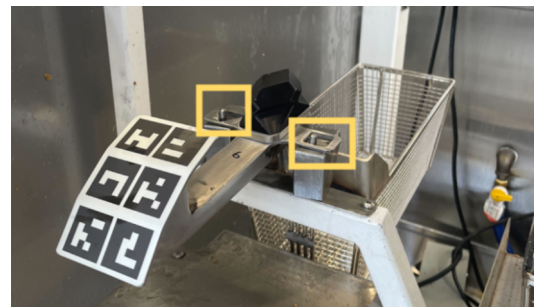
4. Cooking with Specialty Baskets

- A. Align the upper tabs of the Basket with the special in-rack pins.

Note:

- **Specialty Baskets are identified by the label on the Basket handle**
- **Only Specialty Baskets Should be placed in the Special Area**

Specialty Basket in In-Rack



IMPORTANT!

Keep components in place while manual cooking and cleaning!

IMPORTANT!

Do not use abrasives when cleaning the Fryer or Basket markers!