



MISO ROBOTICS

Document Title	Sample Site Configuration Package
Document Summary	This document is an example of the Site Configuration Package that Miso will provide to the restaurant after conducting an onsite restaurant screening to evaluate infrastructure, equipment, power, or layout changes required prior to installing Flippy

Site Configuration Document

This document contains a summary of the required infrastructure, equipment, and construction related changes that this location needs to make to install Flippy.

1. Power requirements
2. Fryers
3. Hood
4. Ansuls
5. Aisle
6. Other.
7. Ethernet port



MISO ROBOTICS

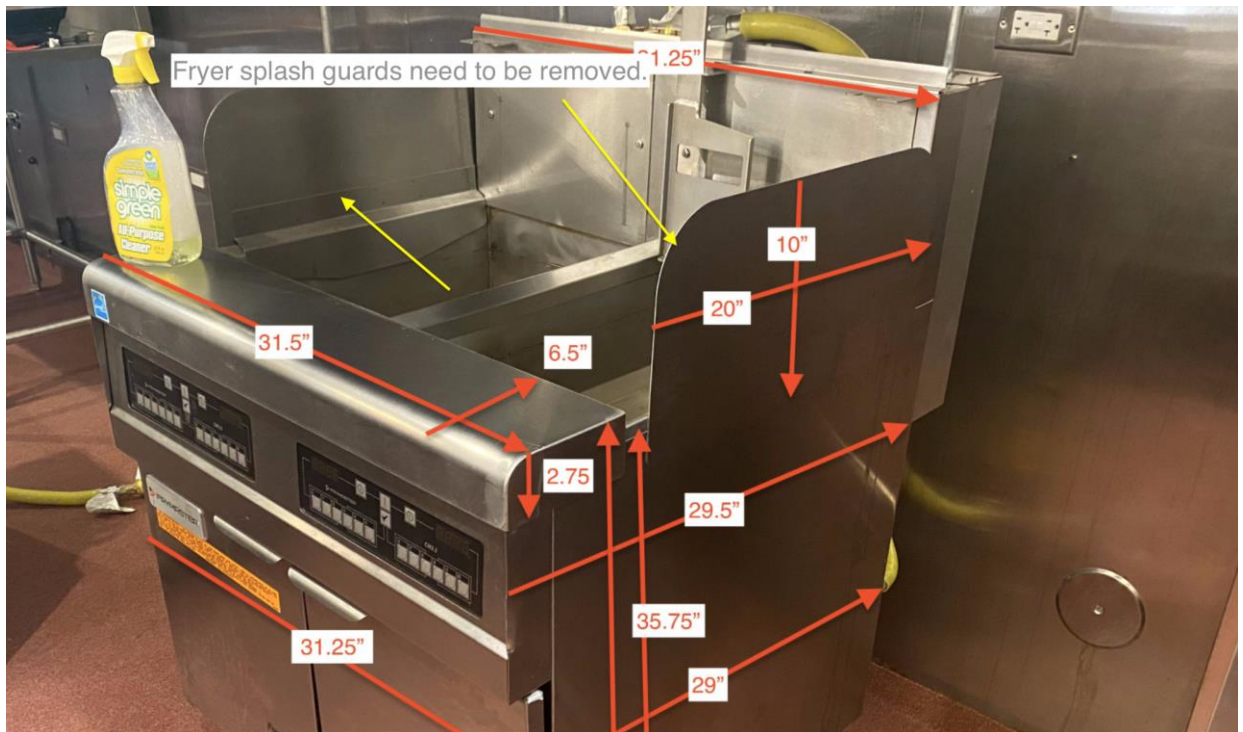
Required Changes to Power

During the site screening, we did not identify the appropriate 208V Nema L6-20. Please see below for all the power outlets required for Flippy.

ID	Component	Voltage	Amperage	Cable Length	Connector
A	Computer	120V	6A	10'	NEMA 5-15P
B	Robotic Arm	208V	5A	10'	NEMA L6-20
C	Food Dispenser	120V	8A	6'	NEMA 5-15P
D	Hot Hold	120-208V	12-14A	6'	NEMA L14-20P
E	Ethernet Port			10'	RJ-45

Fryers

1. Splash guards that are attached to the fryers must be removed so the robotic arm can function without collisions. Please see below for reference.



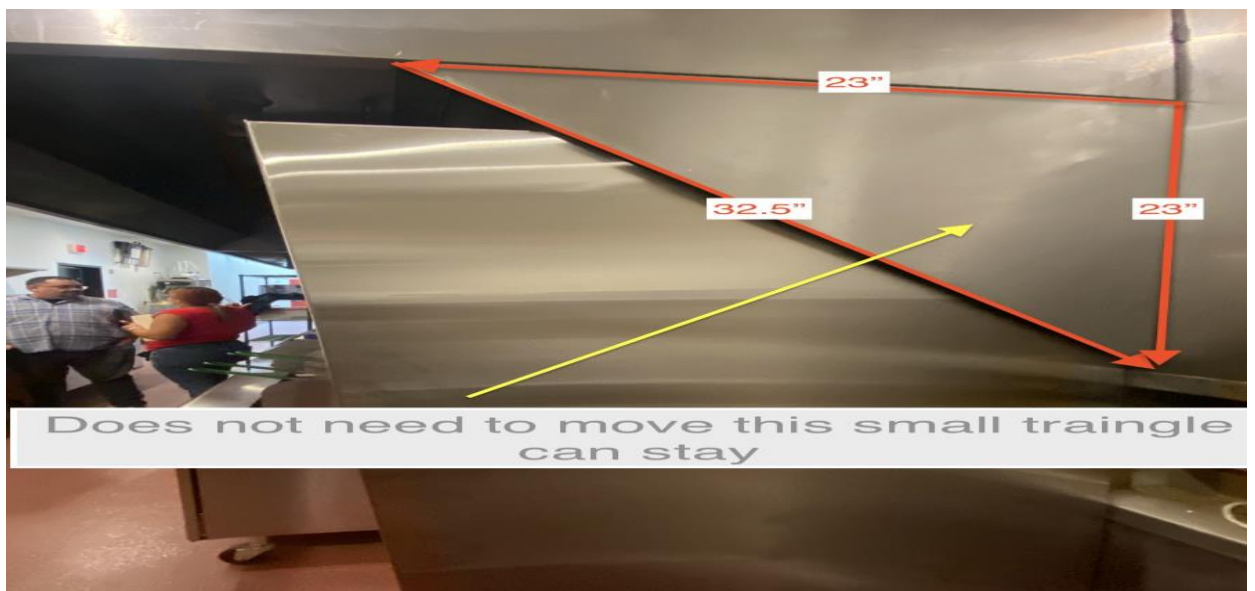
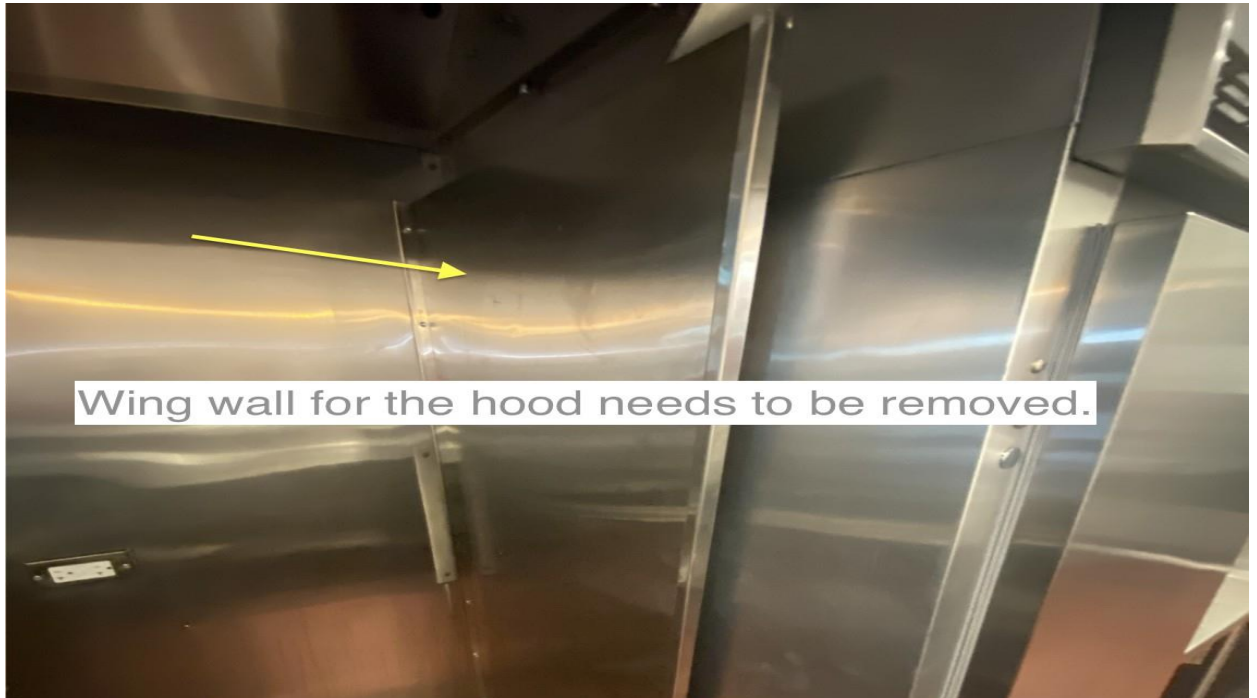


MISO ROBOTICS

Hood

Wing wall under the hood needs to be removed but the smaller triangle supporting the hood can remain.. This area needs to be open/clear for the Miso dispenser to dispense products so that the Robotic Arm can retrieve and begin the cooking process.

Please see the attachment below for reference.

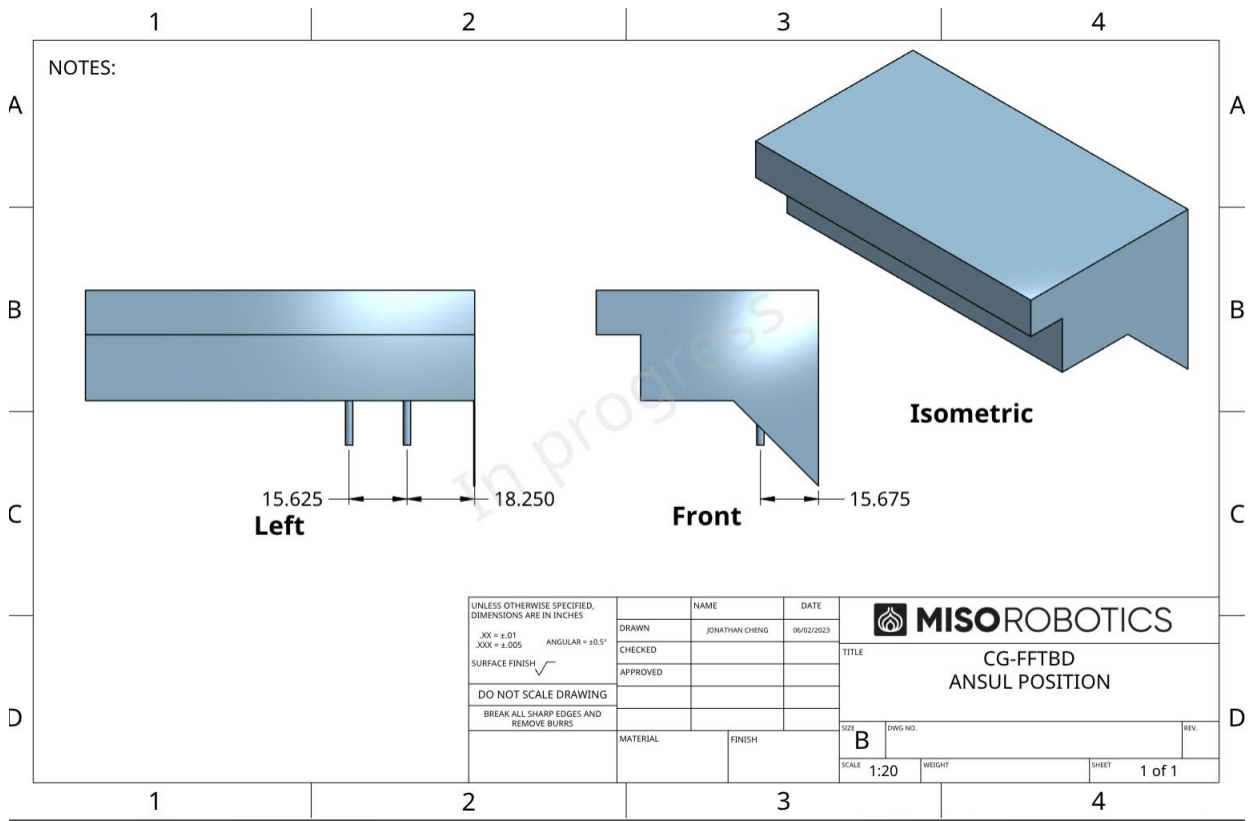




MISO ROBOTICS

Ansuls

Ansuls need to be adjusted. The current Ansul's positioning is far from the Fryers. We will be pushing the fryers closer to the edge of the wall/hood and as a result, the ansuls will not be on top of the fryers in use. Please see the attachment below on the relative placement of the Ansuls.

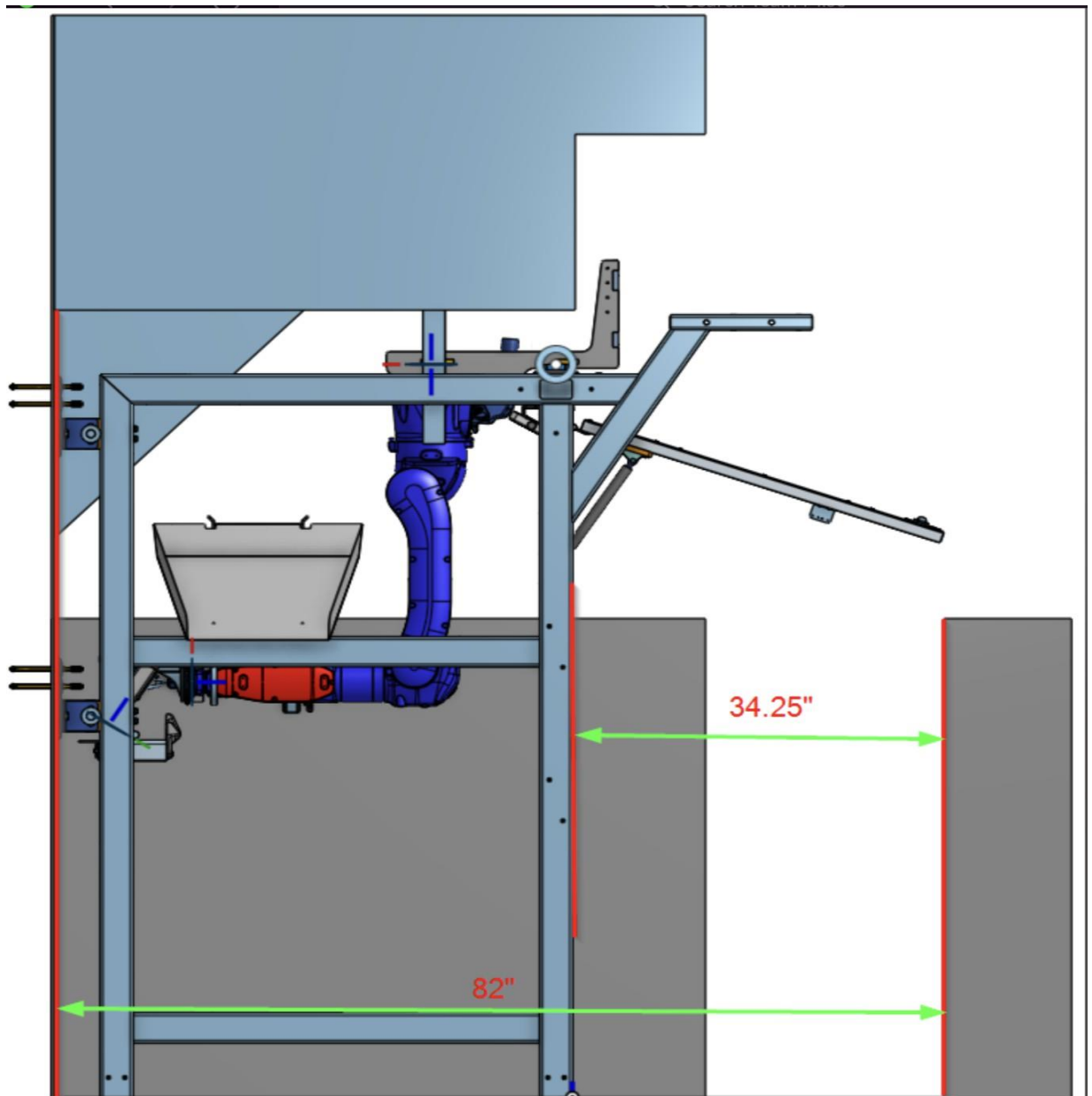




MISO ROBOTICS

Aisle

We estimate that with Flippy installed at your current location, we will be impeding 1.5" inches into your working aisle. This means there are 34 inches walking way from the edge of the hood (48" deep) to the corresponding counter in front of the hood. With Flippy, you will lose 1.5 inches of that walking way and have 34.25 inches of aisle width to work with. Let us know if you see any complications with this. Please see the diagram below for reference.





MISO ROBOTICS

Other

Stainless Steel Table on the right-hand side needs to be removed. We only need all the way up to the sink and the table to be removed. The sink can stay and we are asking to have the left-hand side of the table completely removed.



The salamander on the left needs to be removed or moved to the left closer to the edge of the left-hand side of the hood.



The shelving on the right-hand side of the wall above the SS table needs to be removed or placed more on the right above the sink area.





MISO ROBOTICS

Ethernet port:

1. The network needs to be verified, and the port below is potentially accessible. We will send a validator box to confirm if the network is up to speed and meets our requirements. Attached below is our network requirements doc, please review and update your network requirements.

